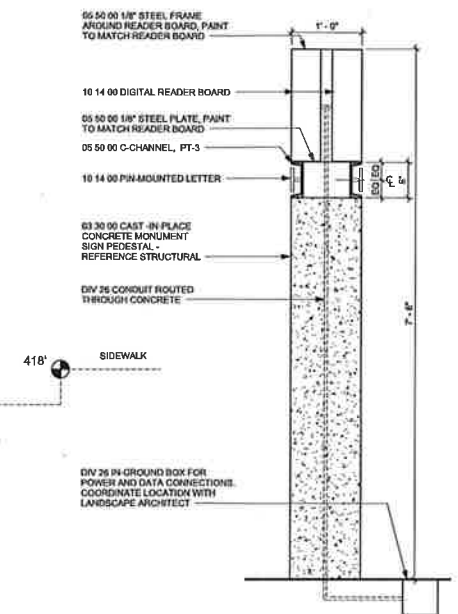
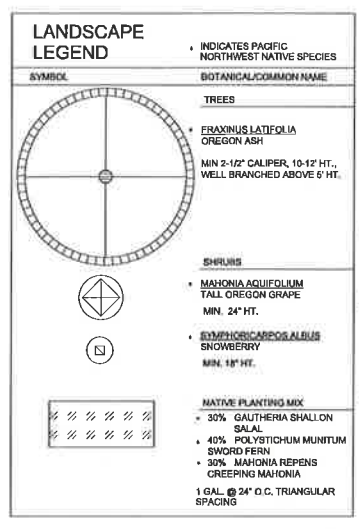


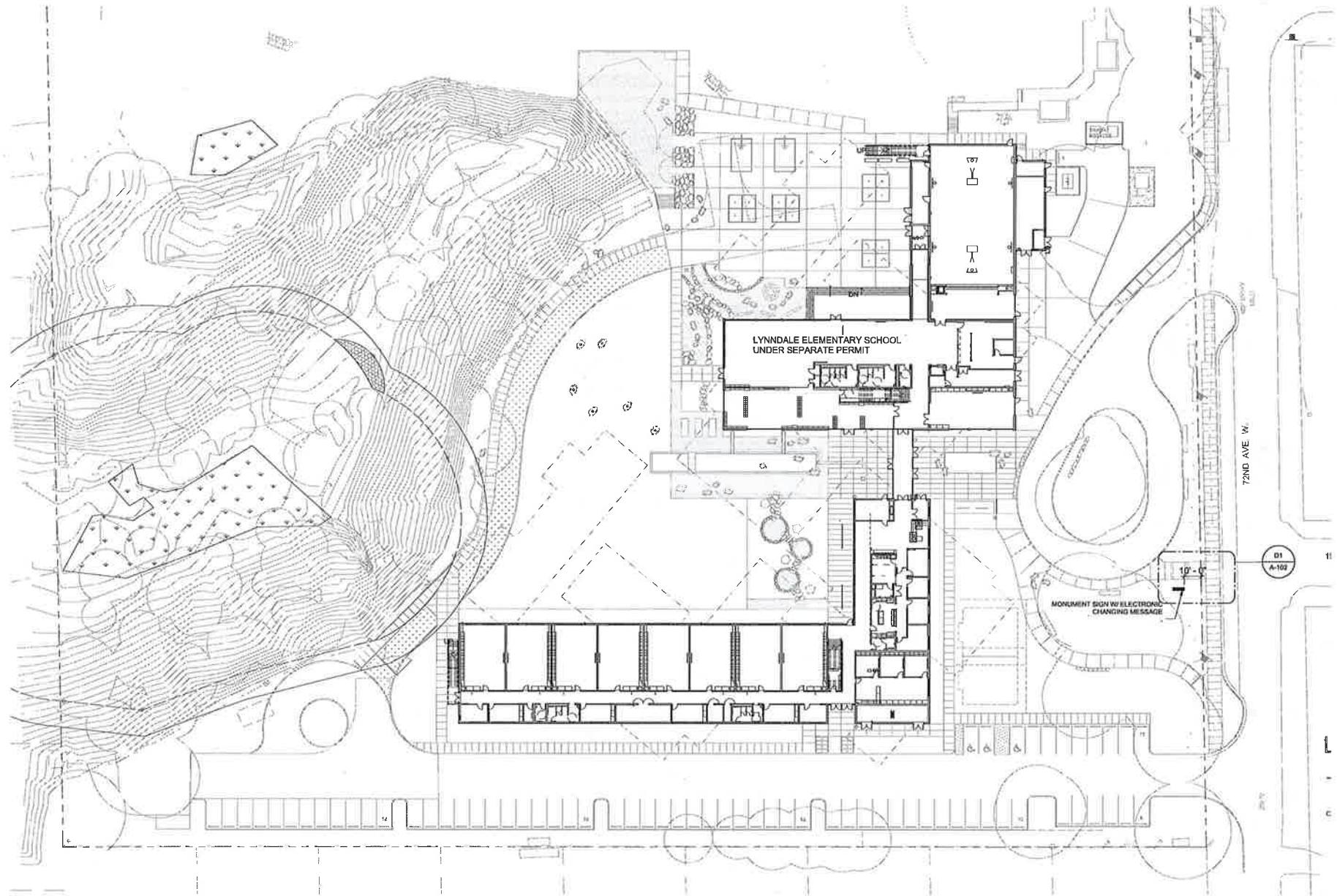
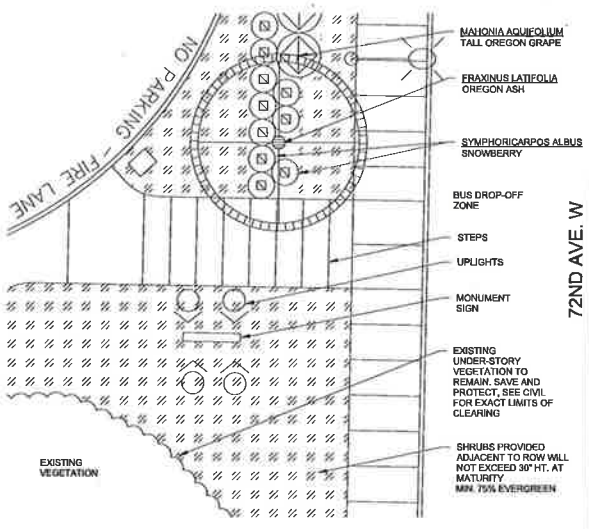
**D1 MONUMENT SIGN ELEVATION**  
1" = 1'-0"



**D4 MONUMENT SIGN SECTION**  
1" = 1'-0"



**LANDSCAPE PLANTING PLAN**  
1/8" = 1'-0"



**A1 SIGNAGE SITE PLAN**  
1" = 3/32"

mahlum

71 COLUMBIA | FLOOR 4  
SEATTLE WA 98104  
(206) 441-4151 OFFICE  
(206) 441-0478 FAX

1231 NW HOYT | SUITE 102  
PORTLAND OR 97209  
(503) 224-4032 OFFICE  
(503) 224-0918 FAX

MAHLUM ARCHITECTS INC



MONUMENT SIGN FOR LYNNDALE  
ELEMENTARY SCHOOL  
19030 72ND AVE.  
LYNNWOOD, WASHINGTON 98036

**RECEIVED**  
**APR 25 2016**  
**CITY OF LYNNWOOD**  
**PERMIT CENTER**

MARK	DATE	DESCRIPTION
BPR-01	10.22.15	BUILDING PERMIT REVISION 01
PCR-01	07.07.15	REVISION 01

ISSUE DATE: 4.21.2016  
ISSUE: SIGNAGE CONDITIONAL USE PERMIT

PROJECT NO.: 2014205.00  
DRAWN BY: BG  
CHECKED BY: DM

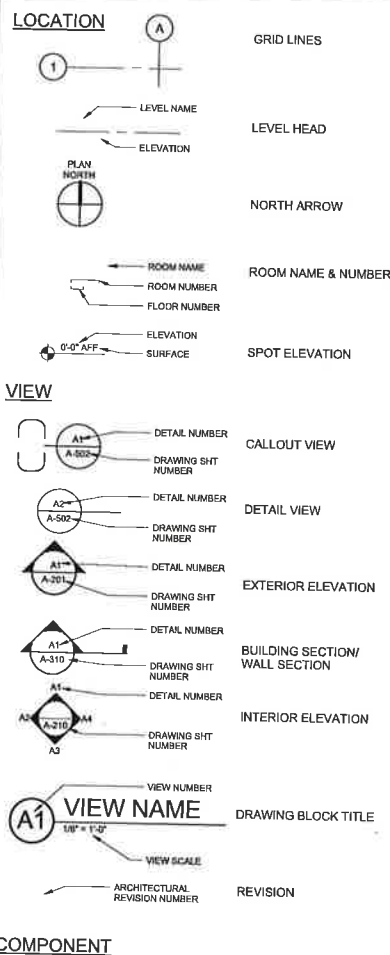
SITE SIGNAGE PLAN

**A-102**

ABBREVIATIONS

AB	ANCHOR BOLT	JAN	JANITOR
ADT	ADDITIONAL	LAV	LAVATORY
AFF	ABOVE FINISH FLOOR	MAS	MASONRY
ALUM	ALUMINUM	MATL	MATERIAL
ANOD	ANODIZED	MAX	MAXIMUM
APPROX	APPROXIMATE	MECH	MECHANICAL
ARCH	ARCHITECT (URAL)	MFR	MANUFACTURED
BD	BOARD	MISC	MISCELLANEOUS
BLDG	BUILDING	MIN	MINIMUM
BLG	BLOCKING	MNT	MOUNTED
BM	BOTTOM OF	MNTL	MOUNTING
BO	BOTTOM	NA	NOT APPLICABLE
BT	BOTTOM CHANNEL	NIC	NOT IN CONTRACT
C	CATCH BASIN	NO	NOMINAL
CFIC	CONTRACTOR FURNISHED; OWNER INSTALLED	NTS	NOT TO SCALE
CG	CORNER GUARD	OA	ON CENTER
CL	CENTER LINE	OC	ON CENTER
CLG	CLEAR	OD	OUTSIDE DIAMETER
CLR	CLEARANCE	OFIC	OWNER FURNISHED; CONTRACTOR INSTALLED
CMJ	CONCRETE MASONRY UNIT	OFIC	OWNER FURNISHED; CONTRACTOR INSTALLED
COLM	COLM	OH	OVERHANG
CONC	CONCRETE	OPH	OPPOSITE HAND
CONTR	CONTRACT	OPNG	OPENING
COORD	COORDINATE (TOR)	OPP	OPPOSITE
CPT	CERAMIC TILE	OR	OVERHEAD
CT	CARPET (ED)	ORD	OVERHEAD
DEM	DEMOLISH; DEMOLITION	OVHD	OVERHEAD
DET	DETAIL	PLAM	PLASTIC LAMINATE
DF	DRAINAGE FLOOR	PLWD	PLYWOOD
DA	DIAMETER	PT	PRESSURE TREATED
DM	DOWN	PVG	PVC
DN	DOWN	R	RADIUS; RISER
DS	DOWNSPOUT	RC	RIBBED REINFORCED CONCRETE
DWG	DRAWING	RD	ROOF DRAIN; ROAD
E	EACH	REQD	REQUIRED
EA	EACH	RM	ROUGH OPENING
EL	ELEVATION	S	SCREW
ELEC	ELECTRIC (AL)	SCM	SELF ADHERING MEMBRANE
ELEV	ELEVATOR	SCMHT	SELF ADHERING MEMBRANE HIGH TEMP
ENCL	ENCLOSURE (URE)	SAMMC	SELF ADHERING MEMBRANE METAL GLAD
EQ	EQUIPMENT	SCHD	SCHEDULE
EW	EACH WAY	SHT	SHEET
EXP	EXPANSION	SHTG	SHEATHING
EXT	EXTERIOR	SH	SIMILAR
FAF	FLUID APPLIED FLASHING	SPKR	SPRINKLER
FDN	FLOOR DRAIN	SS	STAINLESS STEEL
FEC	FIRE EXTINGUISHER CABINET	STD	STANDARD
FF	FINISH FLOOR	STR	STRUCTURE (AL)
FH	FINISH FLOOR	SUSP	SUSPENDED
FIN	FINISH (ED)	SV	SHEET VINYL
FLS	FACE OF CONCRETE	T	TREAD
FOM	FACE OF FINISH	T&B	TACK BOARD
FOS	FACE OF MASONRY	TRU	THROUGH
FRTW	FACE OF STUDS	TRMP	TEMPERED
FT	FIRE RETARDANT TREATED WOOD	TOM	TOP OF MASONRY
FTG	FOOTING	TYP	TYPICAL
GA	GAGE	UN	UNLESS OTHERWISE NOTED
GALV	GALVANIZED, GALVANIC	UTL	UTILITY
GAR	GARAGE	VEH	VEHICLE
GB	GIBBS, GYPSUM BOARD	VERT	VERTICAL
GC	GENERAL CONTRACTOR	VFY	VERIFY
GL	GLASS	W	WEST; WIDE; WASHER
GYP	GYPSUM	W/	WITH
H	HIGH	WO	WOOD; WOOD DOOR
HC	HANDICAP	W/OUT	WITHOUT
HDW	HARDWARE	WC	WATER CLOSET
HM	HOLLOW METAL	WD	WOOD
HORIZ	HORIZONTAL	WDW	WINDOW
HR	HOUR	WR	WEATHER RESISTANT; WATER REPELLENT
HT	HEIGHT	WRB	WEATHER RESISTIVE BARRIER
HVAC	HEATING, VENTILATION, AIR CONDITIONING	WSC	WANSICOT
IBC	INTERNATIONAL BUILDING CODE		
INCL	INCLUDING (ED)		
INFO	INFORMATION		
INSUL	INSULATION		
INT	INTERIOR		

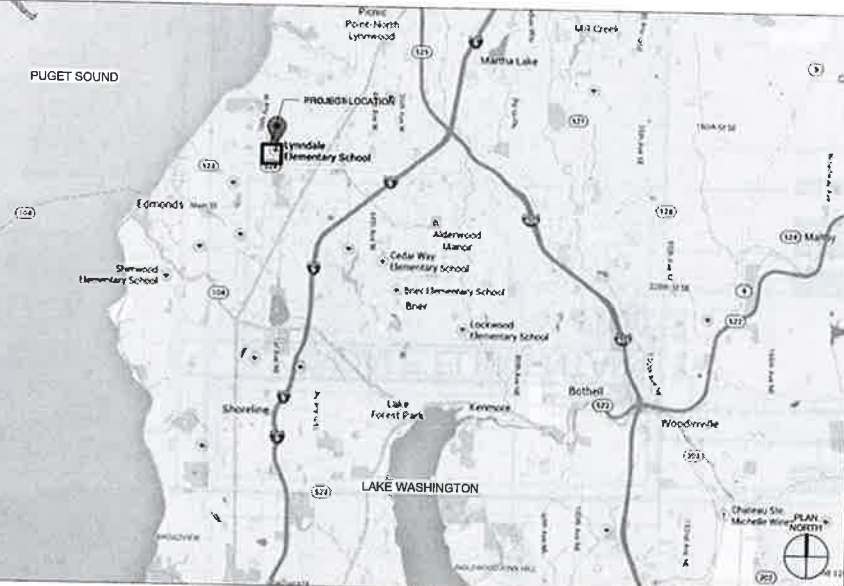
SYMBOLS



PATTERNS

MATERIAL	PATTERN
ASPHALT	MASONRY - CONCRETE BLOCK
CONCRETE	METAL - ALUMINUM
EARTH	METAL - STEEL
GRAVEL	SAND
FLS	WOOD - BLOCKING
INSULATION - ACOUSTICAL	WOOD - CONTINUOUS
INSULATION - BAT	WOOD - FINISH
INSULATION - RIGID	WOOD - PARTICLE BOARD
WALL	
ONE-HOUR RATED WALL	
TWO-HOUR RATED WALL	

VICINITY MAP



GENERAL NOTES

- WORK MUST COMPLY WITH APPLICABLE CODES AND ORDINANCES IN FORCE AT TIME OF BUILDING PERMIT ISSUANCE.
- READ UNDERSTAND AND COMPLY WITH ALL APPLICABLE PROVISIONS OF THE CONSTRUCTION DOCUMENTS FOR THE PROJECT.
- UNLESS OTHERWISE NOTED, PLAN DIMENSIONS SHOWN ARE:
  - AT INTERIOR PARTITIONS TO THE CENTERLINE OF STUD, (CLR) DIMENSIONS TO THE FACE OF FINISH WALL MATERIAL.
  - AT COLUMNS TO THE CENTERLINE OF COLUMNS.
  - AT CONCRETE TO THE FACE OF CONCRETE.
- ON SITE PLANS, TO THE FACE OF EXTERIOR WALL MATERIAL.
- PLACE DOORS NOT LOCATED BY DIMENSION ON PLANS SIX INCHES FROM FACE OF ADJOINING PARTITION TO HINGE EDGE OF DOOR OPENING. PROVIDE 1/8" MINIMUM CLEAR FROM FACE OF ADJOINING PARTITION OR OTHER OBSTRUCTION TO STROKE JAMB EDGE BY DOOR OPENING, UNLESS OTHERWISE NOTED. NOTIFY ARCHITECT IF REQUIRED CLEARANCES ARE NOT AVAILABLE.
- PROVIDE FIRE RESISTANT CLOSURE MEETING THE REQUIREMENTS OF THE DOMESTIC FIRE AUTHORITIES AT ALL GAPS AROUND PENETRATING DUCTS, PIPES, CONDUITS, ETC. AT ALL FIRE RATED BUILDING WALLS, PARTITIONS, CEILING, FLOORS AND DOOR NUMBERS SHOWN ON DRAWINGS ARE FOR CONSTRUCTION PURPOSES ONLY.
- CONCEAL ALL PIPING, CONDUITS, DUCTS, ETC. INSIDE WALLS AND ABOVE CEILING AT ALL ROOMS EXCEPT ELECTRICAL AND TELEPHONE CLOSETS AND MECHANICAL ROOMS. IN SPACES OPEN TO STRUCTURE, ONLY PP90 CONDUITS AND DUCTS THAT SERVE THE SPACE MAY BE EXPOSED. LOCATE SUCH INSTALLATIONS TO MINIMIZE VISIBILITY AND ORGANIZE TO MINIMIZE RUN LENGTHS AND OVERLAPPING. ARCHITECT TO REVIEW SHOP DRAWINGS FOR EXPOSED MECHANICAL, ELECTRICAL, PLUMBING ITEMS PRIOR TO FABRICATION AND INSTALLATION.
- COORDINATE WORK WITH ALL OWNER FURNISHED ITEMS AND PROVIDE ALL REQUIRED MECHANICAL AND ELECTRICAL CONNECTIONS INCLUDING STUB OUTS.
- VERIFY ALL DIMENSIONS, EXISTING AND NEW CONDITIONS ON THE JOB BEFORE PROCEEDING WITH THE WORK.
- NOTIFY THE ARCHITECT OF ANY DISCREPANCIES NOTED AMONG OR BETWEEN THE CONTRACT DOCUMENTS, OWNER PROVIDED INFORMATION, SITE CONDITIONS, MANUFACTURER RECOMMENDATIONS, OR CODES, REGULATIONS, OR RULES OF JURISDICTIONS HAVING AUTHORITY PRIOR TO COMMENCEMENT OF ANY PORTION OF THE WORK.
- THE CONTRACT DOCUMENTS ARE COMPLEMENTARY AND WHAT IS REQUIRED BY ONE IS BINDING AS IF REQUIRED BY ALL.
- PROVIDE REFLECTIVE FEATURES NOT INDICATED IN THE DRAWINGS EVERYWHERE THAT THEY OCCUR AS IF DRAWN IN FULL. NOT ALL OCCURRENCES OF A FEATURE ARE NOTED IN EVERY CASE.
- CONSULT WORK OF ALL TRADES FOR ALL OPENINGS AND ROUGH CUTS THROUGH SLABS, WALLS, CEILING AND ROOF'S FOR DUCTS, PIPES, CONDUITS, CABINETS AND EQUIPMENT. VERIFY SIZE AND LOCATION BEFORE PROCEEDING WITH WORK.
- VERIFY ALL ROUGH-IN DIMENSIONS REQUIRED FOR EQUIPMENT, INCLUDING THAT COORDINATE WITH MECHANICAL AND ELECTRICAL CONTRACTORS FOR EXACT LOCATIONS, TYPES AND SIZES OF ACCESS DOORS REQUIRED BY THEIR WORK.
- PROVIDE ACCESS FOR ALL CONCEALED WALLS, DAMPER CONTROLS, FIRE DAMPER LINKAGE, ELECTRICAL JUNCTION BOXES, ETC. DRAWINGS MAY NOT SHOW ALL REQUIRED ACCESS PANELS. INDICATE REQUIRED ACCESS DOORS ON THE COORDINATION DRAWINGS. OBTAIN ARCHITECT'S APPROVAL FOR LOCATIONS OF ACCESS DOORS PRIOR TO INSTALLATION.
- PRESERVE/TREAT ALL WOOD IN CONTACT WITH CONCRETE OR MASONRY AS REQUIRED BY CODE.
- DO NOT SCALE DRAWINGS.
- CONTRACT DEVICES LOCATED WITHIN FIRE RATED PARTITIONS TO MAINTAIN THE REQUIRED FIRE RATING OF THE PARTITION.
- SITE SURVEY, GEOTECHNICAL INVESTIGATION, AND HAZARDOUS MATERIALS DOCUMENTATION WAS PREPARED BY CONSULTANTS TO THE OWNER AND NOT UNDER THE DIRECTION OF THE ARCHITECT. THIS DOCUMENTATION IS INCLUDED IN THE CONTRACT DOCUMENTS AS AN ACCOMMODATION TO THE OWNER.
- REFER TO DOCUMENTS FOR GENERAL LOCATIONS OF VISIBLE EQUIPMENT, SIGNAL MOUNTING LOCATION.
- SIX DIGIT NUMBERS AT DRAWING NOTES (09 28 00 GYPSUM BOARD FOR EXAMPLE) NOT INTENDED TO ASSIGN WORK TO SUB CONTRACTORS. ALL ITEMS ARE INCLUDED IN SCOPE WHETHER OR NOT A SPECIFICATION REFERENCE IS CITED.
- REPAIR/PATCH FOR REINSTATE ALL CEILING & WALLS DAMAGED FOR MECHANICAL AND ELECTRICAL WORK ON THE FLOORS BELOW AND IN OTHER AREAS OF THE BUILDING BEYOND THE AREAS INDICATED.
- FIRE-RETARDANT TREAT ALL WOOD BLOCKING AS REQUIRED BY APPLICABLE CODES.

GENERAL FIRE DEPARTMENT REQUIREMENTS

- ALL HYDRANTS ARE TO BE INSTALLED AND OPERATIONAL PRIOR TO ANY COMBUSTIBLE CONSTRUCTION OR MATERIAL STORAGE.
- MAINTAIN ACCESS AND FIRE LANE(S) WITHIN THE SITE ARE TO BE A FIRE DEPARTMENT APPROVED ALL WEATHER SURFACE AND BE CONTINUOUSLY MAINTAINED THROUGHOUT THE DEMOLITION AND CONSTRUCTION PROCESS.
- SPRINKLER PROTECTION IS REQUIRED IN ALL CONCEALED SPACES UNLESS THE ENTIRE SPACE IS CONSTRUCTED OF NON-COMBUSTIBLE MATERIAL, AND THE SPRINKLER RISER ROOM IS TO CONTAIN SPRINKLER HEADS AND ASSOCIATED COMPONENTS AND THE FIRE ALARM PANEL. NO OTHER EQUIPMENT OR USE ALLOWED.
- A MINIMUM OF 36" CLEAR SPACE REQUIRED AROUND ALL SPRINKLER RISER(S).
- SPRINKLER PROTECTION REQUIRED AT THE TOP AND BOTTOM OF ELEVATOR SHAFTS AND IN ELEVATOR MACHINE ROOMS.
- ALL SPRINKLER HEADS PROTECTING THE ELEVATOR SHAFTS AND MACHINE ROOMS SHALL BE CONTROLLED BY SUPERVISED CONTROL VALVE.
- SPRINKLER PROTECTION SHALL BE PROVIDED UNDER ALL CANOPIES, BALCONIES, OR OTHER BUILDING PROJECTIONS IN EXCESS OF 48", REGARDLESS OF CONSTRUCTION TYPE.
- AN INSPECTOR'S TEST VALVE SHALL BE PROVIDED NEAR THE REMOTE END OF THE NET (SPRINKLER SYSTEMS) AND PLUMBED TO THE EXTERIOR OF THE BUILDING.
- ALL SPRINKLER DRAINS SHALL BE PLUMBED TO THE EXTERIOR OF THE BUILDING.
- PROVIDE VERIFICATION OF ADEQUATE SIGNAL STRENGTH FOR EMERGENCY RESPONDER RADIO RECEPTION.

PROJECT DIRECTORY

<b>OWNER</b>	EDMONDS SCHOOL DISTRICT 20420 88TH AVE W LYNNWOOD, WA 98036 425.431.7172 OFFICE CONTACT: TAINE WILTON WILTON@EDMONDS.WEDNET.EDU
<b>ARCHITECT</b>	MAHLUM 71 COLUMBIA, SUITE 400 SEATTLE, WA 98104 206.441.4151 OFFICE CONTACT: DAVID MOUNT DMOUNT@MAHLUM.COM
<b>OWNER CONSULTANT: HAZARDOUS MATERIALS</b>	PBS 2517 EASTLAKE AVENUE E SEATTLE, WA 98102 206.423.9539 OFFICE CONTACT: MARK HILEY MARK.HILEY@PBSENV.COM
<b>OWNER CONSULTANT: COMMISSIONING AGENT</b>	F5I CONSULTING ENGINEERS 508 SECOND AVENUE, SUITE 700 SEATTLE, WA 98104 206.622.3321 OFFICE CONTACT: BRANDON CRANE BRANDONC@F5I-ENGINEERS.COM
<b>OWNER CONSULTANT: SURVEYOR</b>	CORE DESIGN 14711 NE 29TH PLACE #101 BELLEVUE, WA 98007 425.858.7877 OFFICE CONTACT: GLENN SPRAGUE GXS@COREDESIGNINC.COM
<b>OWNER CONSULTANT: GEOTECHNICAL ENGINEER</b>	ASSOCIATED EARTH SCIENCE 911 FIFTH AVENUE KIRKLAND, WA 98033 425.827.7701 OFFICE CONTACT: BRUCE GUENZLER BRUCEG@AESGEO.COM
<b>OWNER CONSULTANT: ENVIRONMENTAL</b>	ESA 5309 SHILSHOLE AVENUE NW, SUITE 200 SEATTLE, WA 98107 206.789.9658 OFFICE CONTACT: AARON BOOBY ABOBY@ESSASSOC.COM
<b>OWNER CONSULTANT: BUILDING ENVELOPE</b>	WETHERHOLT & ASSOCIATES, INC. 13104 NE 85TH ST KIRKLAND, WA 98033 425.822.8379 OFFICE CONTACT: DON DAVIS DOND@WETHERHOLT.COM
<b>OWNER CONSULTANT: SPECIAL INSPECTIONS</b>	GEOTEST SERVICES INC. 20611 67TH AVE NE, UNIT A ARLINGTON, WA 98233 360.733.7318 OFFICE CONTACT: KEVIN RICHARDSON KEVINR@GEOTEST-INC.COM
<b>CIVIL ENGINEER</b>	KPFF 1801 FIFTH AVENUE #1600 SEATTLE, WA 98101 206.822.5822 OFFICE CONTACT: THADDEUS EGGING THADDEUS.EGGING@KPFF.COM
<b>LANDSCAPE ARCHITECT</b>	WEISMAN DESIGN GROUP 2329 E MADISON STREET SEATTLE, WA 98112 206.322.1732 OFFICE CONTACT: NICK HAGAN NICK@WDGINC.COM
<b>STRUCTURAL ENGINEER</b>	PCS STRUCTURAL SOLUTIONS 811 FIRST AVENUE, SUITE 620 SEATTLE, WA 98104 206.292.5076 OFFICE CONTACT: CRAIG STAUFFER, P.E. CSTAUFFER@PCS-STRUCTURAL.COM
<b>MECHANICAL ENGINEER</b>	METRIX ENGINEERS 1131 SW SEVENTH STREET RENTON, WA 98057 425.336.2822 OFFICE CONTACT: BRADY BELL BRADYB@METRIXENG.COM
<b>ELECTRICAL ENGINEER</b>	TRAVIS FITZMAURICE & ASSOCIATES 1200 WESTLAKE AVE N, SUITE 810 SEATTLE, WA 98109 206.285.7229 OFFICE CONTACT: MIKE FITZMAURICE MIKE@TRAVISFITZMAURICE.COM
<b>ACOUSTICAL ENGINEER</b>	SSA ACOUSTICS 222 ETRURIA STREET, SUITE 100 SEATTLE, WA 98109 206.839.0819 OFFICE CONTACT: MOHAMED AIT ALLAOUA MOHAMED@SSAACOUSTICS.COM
<b>FOOD SERVICE</b>	HALLIDAY ASSOCIATES 656 NW NORWOOD STREET CAMAS, WA 98607 360.854.9657 OFFICE CONTACT: LAURA BOURLAND LAURA@HADESIGN.COM
<b>COST ESTIMATOR</b>	THE ROBINSON COMPANY 101 STEWART STREET, SUITE 925 SEATTLE, WA 98101 206.441.8872 OFFICE CONTACT: SHARON KENNEDY SKENNEDY@ROBINSON-CO.COM

PROJECT DATA

<b>PROJECT DESCRIPTION:</b>	MONUMENT SIGN FOR NEW LYNNDALE ELEMENTARY SCHOOL
<b>PROJECT ADDRESS:</b>	19030 72ND AVE. LYNNWOOD, WASHINGTON 98038
<b>PARCEL NO.:</b>	27041700300900
<b>LEGAL DESCRIPTION:</b>	ALL OF THE SOUTHEAST QUARTER OF THE NORTHWEST QUARTER OF THE SOUTHWEST QUARTER, SECTION 17, TOWNSHIP 27 NORTH, RANGE 4 EAST, WILLAMETTE MERIDIAN, EXCEPT THE WEST 30.00 FEET OF THE EAST 60.00 FEET THEREOF.

**mahlum**  
71 COLUMBIA | FLOOR 4  
SEATTLE WA 98104  
(206) 441-4151 OFFICE  
(206) 441-0478 FAX

1231 NW HOYT | SUITE 102  
PORTLAND OR 97209  
(503) 224-4032 OFFICE  
(503) 224-0918 FAX  
MAHLUM ARCHITECTS INC

8559 REGISTERED ARCHITECT  
DAVID MOUNT  
STATE OF WASHINGTON

EDMONDS  
**15**  
SCHOOL DISTRICT  
MONUMENT SIGN FOR LYNNDALE ELEMENTARY SCHOOL  
19030 72ND AVE.  
LYNNWOOD, WASHINGTON 98038

CCD-01 1.8.15	BUILDING PERMIT	CCD 01
BPR-02 12.11.15	REVISION 02	REVISION 02
MARK DATE	DESCRIPTION	
ISSUE DATE:	4.21.2016	
ISSUE:	SIGNAGE CONDITIONAL USE PERMIT	
PROJECT NO.:	2014905.00	
DRAWN BY:	BG	
CHECKED BY:	DM	
PROJECT DATA		



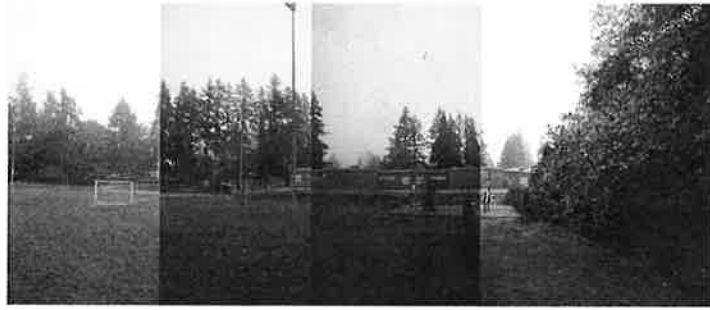
A1



A2



B



C



D



E



F



G



H



J



K1



K2

mahlum

71 COLUMBIA | FLOOR 4  
SEATTLE WA 98104  
(206) 441-4151 OFFICE  
(206) 441-0478 FAX

1231 NW HOYT | SUITE 102  
PORTLAND OR 97209  
(503) 224-4032 OFFICE  
(503) 224-0918 FAX

MAHLUM ARCHITECTS INC



MONUMENT SIGN FOR LYNNDALE  
ELEMENTARY SCHOOL  
15036 72ND AVE.  
LYNNWOOD, WASHINGTON 98036

MARK	DATE	DESCRIPTION
ISSUE DATE:	4.21.2016	
ISSUE:	SIGNAGE CONDITIONAL USE PERMIT	
PROJECT NO.:	2014905.00	
DRAWN BY:	Author	
CHECKED BY:	Checker	
COPYRIGHT MAHLUM ARCHITECTS, INC. 2016. ALL RIGHTS RESERVED.		

SITE CONTEXT PHOTOS